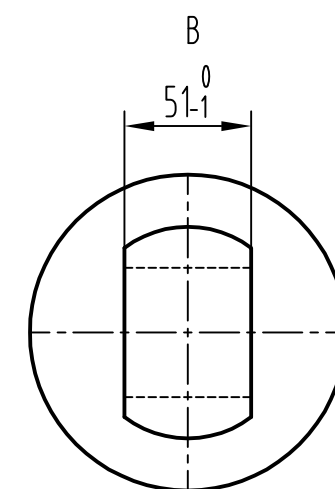


instruction:

- 1.maximum pressure:2500psi
- 2.after the test, Non mating surface should be painted in color. even painting, no dropping, no sagging.
- 3.Others accomplish according to the standard QC/T460-2010<<cylinder for dump truck technology>>



						AKP85-250-A (AK85-4402-250)			Akaliko by Rockmac
Mark	Number of mark	Subarea	Change file No.	Signature	Date	Phase mark	Weight	scale	
Designed			Standard						Single acting telescopic cylinder
Drawn									
Checked									5TG-E206×6331PK/A
Craft			Approved			Sheet	OF		