

Technical drawing of a motor assembly, showing front, side, and detail views with dimensions and labels.

Front View (Top):

- Overall width: 130
- Overall height: 305
- Motor body diameter: $\phi 208$
- Terminal box diameter: $\phi 79$
- Terminal box mounting angle: 15°
- Terminal box mounting hole diameter: $\phi 54 \pm 0.2$
- Terminal box mounting hole position: A
- Terminal box mounting hole position: B
- Terminal box mounting hole position: C
- Terminal box mounting hole position: D
- Terminal box mounting hole position: E
- Terminal box mounting hole position: F
- Terminal box mounting hole position: G
- Terminal box mounting hole position: H
- Terminal box mounting hole position: I
- Terminal box mounting hole position: J
- Terminal box mounting hole position: K
- Terminal box mounting hole position: L
- Terminal box mounting hole position: M
- Terminal box mounting hole position: N
- Terminal box mounting hole position: O
- Terminal box mounting hole position: P
- Terminal box mounting hole position: Q
- Terminal box mounting hole position: R
- Terminal box mounting hole position: S
- Terminal box mounting hole position: T
- Terminal box mounting hole position: U
- Terminal box mounting hole position: V
- Terminal box mounting hole position: W
- Terminal box mounting hole position: X
- Terminal box mounting hole position: Y
- Terminal box mounting hole position: Z

Side View (Bottom):

- Overall width: 130
- Overall height: 305
- Motor body diameter: $\phi 208$
- Terminal box diameter: $\phi 79$
- Terminal box mounting angle: 15°
- Terminal box mounting hole diameter: $\phi 54 \pm 0.2$
- Terminal box mounting hole position: A
- Terminal box mounting hole position: B
- Terminal box mounting hole position: C
- Terminal box mounting hole position: D
- Terminal box mounting hole position: E
- Terminal box mounting hole position: F
- Terminal box mounting hole position: G
- Terminal box mounting hole position: H
- Terminal box mounting hole position: I
- Terminal box mounting hole position: J
- Terminal box mounting hole position: K
- Terminal box mounting hole position: L
- Terminal box mounting hole position: M
- Terminal box mounting hole position: N
- Terminal box mounting hole position: O
- Terminal box mounting hole position: P
- Terminal box mounting hole position: Q
- Terminal box mounting hole position: R
- Terminal box mounting hole position: S
- Terminal box mounting hole position: T
- Terminal box mounting hole position: U
- Terminal box mounting hole position: V
- Terminal box mounting hole position: W
- Terminal box mounting hole position: X
- Terminal box mounting hole position: Y
- Terminal box mounting hole position: Z

Detail View (Right):

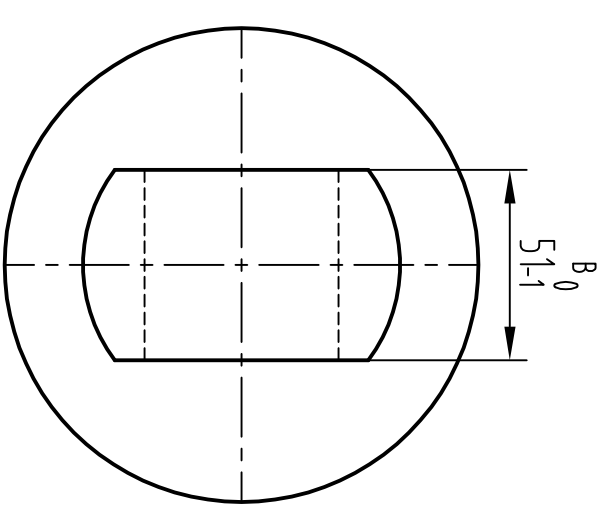
- Overall width: 130
- Overall height: 305
- Motor body diameter: $\phi 208$
- Terminal box diameter: $\phi 79$
- Terminal box mounting angle: 15°
- Terminal box mounting hole diameter: $\phi 54 \pm 0.2$
- Terminal box mounting hole position: A
- Terminal box mounting hole position: B
- Terminal box mounting hole position: C
- Terminal box mounting hole position: D
- Terminal box mounting hole position: E
- Terminal box mounting hole position: F
- Terminal box mounting hole position: G
- Terminal box mounting hole position: H
- Terminal box mounting hole position: I
- Terminal box mounting hole position: J
- Terminal box mounting hole position: K
- Terminal box mounting hole position: L
- Terminal box mounting hole position: M
- Terminal box mounting hole position: N
- Terminal box mounting hole position: O
- Terminal box mounting hole position: P
- Terminal box mounting hole position: Q
- Terminal box mounting hole position: R
- Terminal box mounting hole position: S
- Terminal box mounting hole position: T
- Terminal box mounting hole position: U
- Terminal box mounting hole position: V
- Terminal box mounting hole position: W
- Terminal box mounting hole position: X
- Terminal box mounting hole position: Y
- Terminal box mounting hole position: Z

Labels:

- 2-NPT1
- Name Plate
- SR4.2.5
- $\phi 52.5 \pm 0.2$
- 51-1

1. rated pressure: 2500psi

3.Others accomplish according to the standard QC/T460-2010<<cylinder for dump truck technology>>

[illegible]