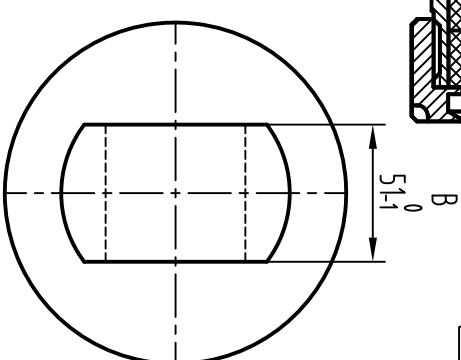


Technical drawing of a vertical steam engine cylinder assembly in cross-section. The drawing shows the internal components including the piston, connecting rod, and crankshaft. Key dimensions are provided in both millimeters and inches. The top view shows a circular flange with a diameter of  $\phi 54 \pm 0.2$  and a central hole of  $\phi 79$ . The main body has a diameter of  $\phi 208$ . The bottom view shows a circular flange with a diameter of  $\phi 52.5 \pm 0.2$  and a central hole of  $\phi 42.5$ . The total height of the assembly is 130 mm. The drawing is labeled "CLOSED" and "S110NEC7421".



## technology>>

[illegible]