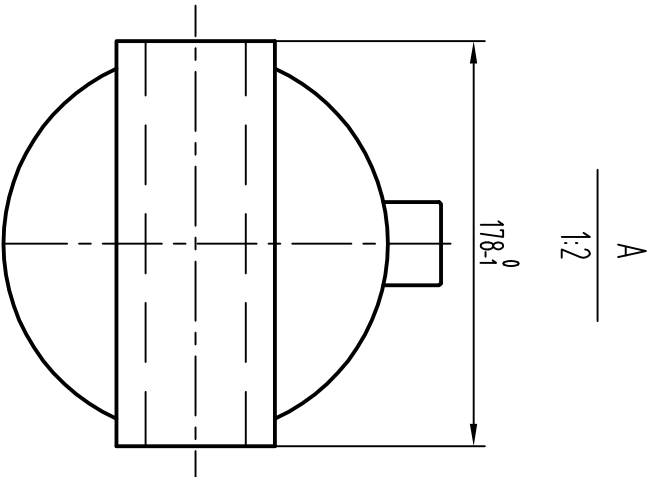


Closed1245±5    Stroke2753

instruction:

- 1.maximum pressure:2500psi
- 2.after the test, Non mating surface should be painted in color. even painting, no dropping, no sagging.
- 3.Others accomplish according to the standard QC/T460-2010<<cylinder for dump truck technology>>



										<div>AKP63-108-A</div> <div>(AK63-4402-108)</div>	<div>Akaiiko</div> <div>by Rockmac</div>		
Mark	Number of mark	Subared	Change	file No.	Signature	Date					Single acting telescopic cylinder		
Designed				Standard									
Drawn													
Checked													
Craft				Approved									
							Phase mark				Weight	scale	3TG-E152.4×2753PK/A
											1:2		
							Sheet				OF		